



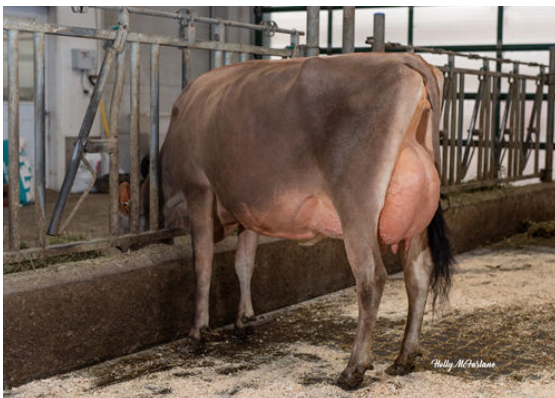
HAWARDEN IMPULS PREMIER  
 ARETHUSA ON TIME VOGUE EX-94-5YR-CAN 3\*  
 LENCREST ON TIME  
 HURONIA CENTURION VERONICA 20J EX-97%-5E-USA  
 SOONER CENTURION  
 GENESIS RENAISSANCE VIVIANNE VG-87-2YR-CAN 7\*



PAULLOR VIRAL MAVORNA



BRIDON PNV VERONICA



BRIDON PNV GRACIE

**GLPI +1458 PRO\$ 821** JH1F JNSF

Reg. #: JEAUSM705410 aAa: DMS:  
 Born: 03/13/2015 Kappa Casein: AB Beta Casein: A2A2

**PRODUCTION** 248 Herds 676 Daughters 98% Rel GEBV 24\*AUG

Milk kg	Fat kg	Fat %	Protein kg	Protein %
-76	41	+0.58	11	+0.19

Daughter Average (ME) Milk **8,629 kg** Fat **463 kg** Protein **342 kg**

**HEALTH & REPRODUCTION** **Immunity**

Herd Life	96	Calf Immunity	
Somatic Cell Score	91	Calving Ability	96
Daughter Fertility	99	Daughter Calving Ability	96
Body Condition Score	91	Milking Speed	99
Mastitis Resistance	88	Milking Temperament	106
Lactation Persistence	102	Metabolic Disease Resistance	97

**CONFORMATION** 212 Herds 524 Daughters 97% Rel GEBV 24\*AUG

Conformation	8	Dairy Strength	12
Mammary System	2	Rump	3
Feet & Legs	10	GP or Better %	85

