



**ORRARYD**

KAMOURASKA POKER RUBIS VG-86-4YR-CAN 15\*

DES CHAMOIS POKER

KAMOURASKA PETERSLUND RUBY VG-87-3YR-CAN 10\*

PETERSLUND

KAMOURASKA JERRY VIRVANA EX-90-5YR-CAN 9\*

**GPTI 524**

TF AMF

AH1F AH2C AHCF

Reg. #: AYCANN108719731

aAa: 561432

DMS: 345,456

Born: 11/29/2013

Kappa Casein: AE

Beta Casein: A1A2

**PRODUCTION**

154 Herds

406 Dtrs

89% Rel

MACE-G / 12-24

Milk lbs	Fat lbs	Fat %	Protein lbs	Protein %
1156	56	+0.05	54	+0.09
NM\$ 592	CM\$ 602	FM\$ 503	GM\$ 587	

Daughter Average (ME) Milk **20,919 lbs** Fat **884 lbs** Protein **715 lbs**

**HEALTH & REPRODUCTION**

Immunity 97

Productive Life	0.1	Calf Immunity	97
Somatic Cell Score	3.03	Cow Conception Rate	-0.5
Daughter Pregnancy Rate	-1.6	Heifer Conception Rate	1.8
Livability	1.8		

**CONFORMATION**

108 Herds

285 Dtrs

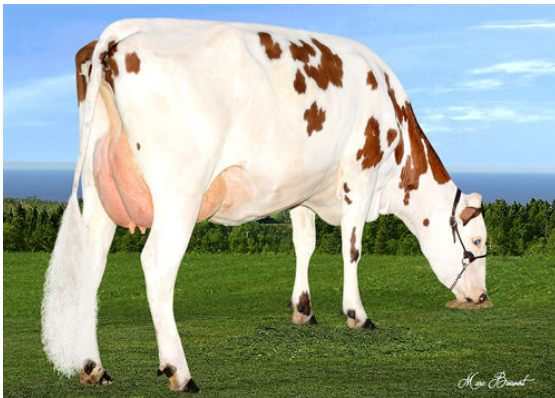
80% Rel

ABA-G

PTAT	-0.6		
Stature		Short	-2.4
Strength		Frail	-1.3
Body Depth		Shallow	-1.2
Dairy Form		Open Rib	+0.2
Rump Angle		Sloped	+2.0
Rump Width		Narrow	-0.7
Rear Legs Side View		Posty	-0.1
Foot Angle		Steep	+0.3
Fore Attachment		Loose	-1.0
Rear Udder Height		High	+0.1
Rear Udder Width		Wide	+0.1
Udder Cleft		Weak	-0.3
Udder Depth		Deep	-0.8
Fore Teat Placement		Close	+0.1
Teat Length		Short	-3.8



GUIMOND REVOLUTION DOMINANTE



GUIMOND REVOLUTION DOMINANTE