



DES COTEAUX RUBYWAY
 MARBRAE ARBITER'S CATALINA EX-90-2E-CAN 1*
 RUISSEAU CLAIR ARBITER
 MARBRAE OBLIQUE'S CAMBRIDGE EX-92-6E-CAN 2*
 JELYCA OBLIQUE
 MARBRAE KINDLE'S CAMBER GP-82-2YR-CAN

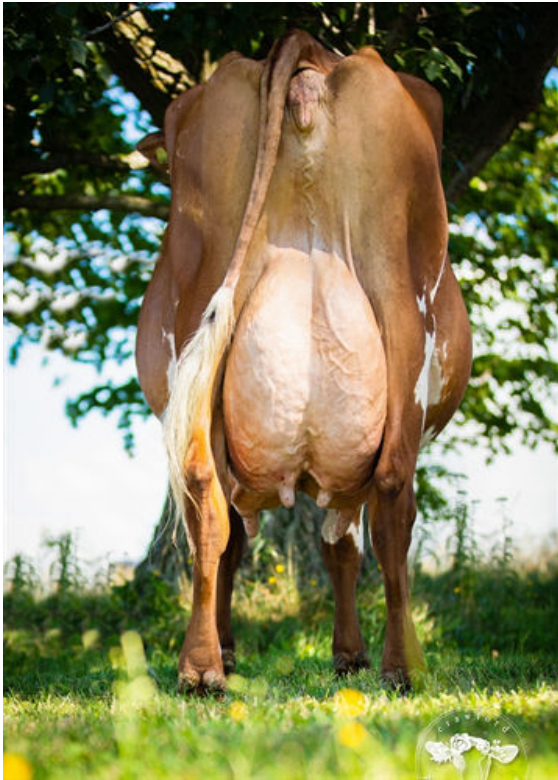
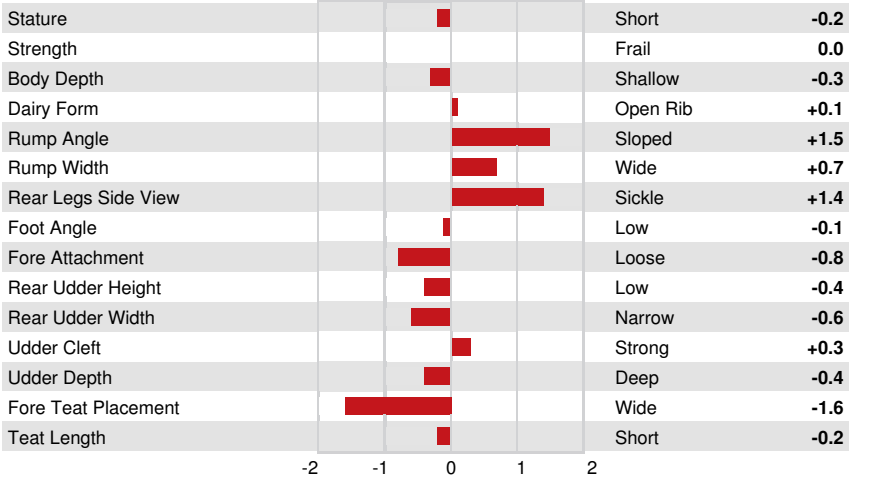
GPTI 556

TF AMF	AH1F AH2F AHCF	
Reg. #: AYCANN120893455	aAa: 342516	DMS:
Born: 10/04/2021	Kappa Casein: AA	Beta Casein: A1A2

PRODUCTION			CDCB-G / 08-24	
Milk lbs	Fat lbs	Fat %	Protein lbs	Protein %
1661	75	+0.04	52	-0.01
NM\$ 591	CM\$ 590	FM\$ 583	GM\$ 595	

HEALTH & REPRODUCTION		Immunity 102	
Productive Life	1.0	Calf Immunity	102
Somatic Cell Score	3.09	Cow Conception Rate	0.0
Daughter Pregnancy Rate	-0.2	Heifer Conception Rate	1.5
Livability	-0.1		

CONFORMATION		ABA-G	
PTAT	32% Rel		
PTAT	-0.1		



MARBRAE OBLIQUE'S CAMBRIDGE
 GRANDDAM



MARBRAE ARBITER'S CATALINA

DAM