



GENERATIONS EPIC  
 ROCKYMOUNTAIN SUPER LEITA EX-90-4E-CAN 18\*  
 CHARLESDALE SUPERSTITION  
 FLEURY GEN BAXTER LISA EX-92-3E-CAN 12\*  
 EMERALD-ACR-SA T-BAXTER  
 CALBRETT SHOTTLE LISAMAREE EX-91-6YR-CAN 30\*

**GTPI 2296**

TD TL TY TV HH1F HH2F HH3F HH4F HH5F HH6F HCDF HMWF

Reg. #: HOCANM11445826 aAa: 315426 DMS: 345,135  
 Born: 06/17/2012 Kappa Casein: BB Beta Casein: A2B

**PRODUCTION** 731 Herds 2386 Dtrs 96% Rel MACE-G / 04-26

Milk lbs 232	Fat lbs -52	Fat % -0.23	Protein lbs -10	Protein % -0.07
NM\$ -262	CM\$ -281	FM\$ -211	GM\$ -311	DWP\$
Feed Efficiency -146	RFI -20	Feed Saved -243	Methane Efficiency 107	Milking Speed 7.40

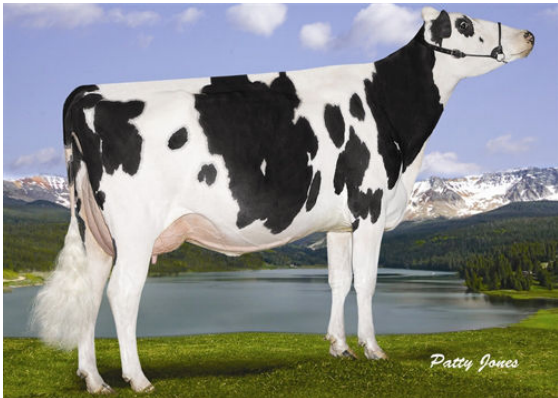
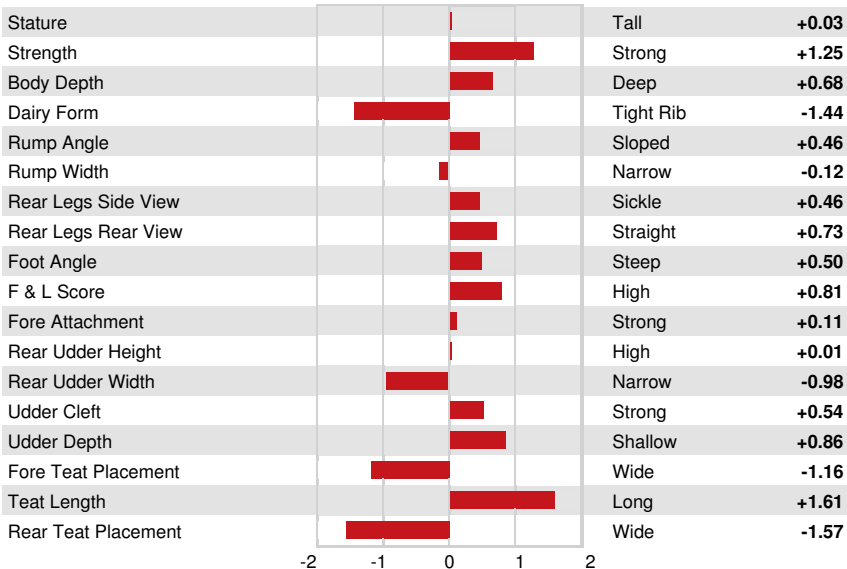
Daughter Average (ME) Milk **25,601 lbs** Fat **940 lbs** Protein **798 lbs**

**HEALTH & REPRODUCTION** Immunity **94**

Productive Life	2.5	Calf Immunity	94
Somatic Cell Score	2.80	Cow Conception Rate	0.7
Daughter Pregnancy Rate	1.4	Heifer Conception Rate	-1.0
Livability	2.4	Sire Calving Ease	1.6% 93% Rel
Heifer Livability	0.5	Daughter Calving Ease	2.3% 88% Rel
Fertility Index	0.5	Sire Stillbirth	4.4%
		Daughter Stillbirth	5.5%

**CONFORMATION** 340 Herds 697 Dtrs 95% Rel MACE / 04-26

PTAT	0.20	Body Composite	1.62
Udder Composite	-0.20	Dairy Composite	-1.12
Feet & Legs Composite	0.82		



ROCKYMOUNTAIN SUPER LEITA  
 Dam