



CALVING EASE

FLEVO GENETICS SNOWMAN  
 COMESTAR LAUTAMA GOLDWYN VG-88-3YR-CAN 22\*  
 BRAEDALE GOLDWYN  
 COMESTAR LAUTAMIE TITANIC VG-89-2YR-CAN 33\*  
 HARTLINE TITANIC  
 COMESTAR LAUTELMA IGNITER VG-89-4YR-CAN 21\*

**GTPI 2205**

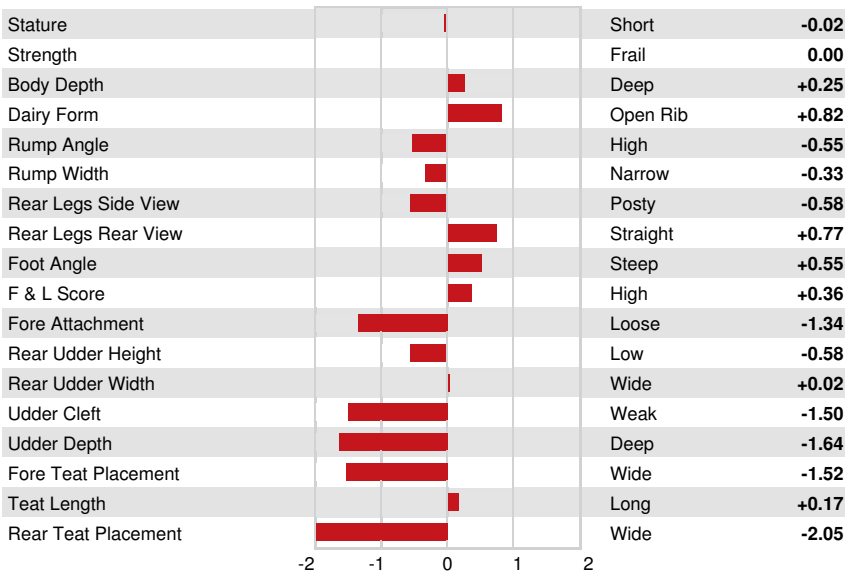
SP TD B/R TR TL TY TV HH1F HH2F HH3F HH4F HH5F HH6F HCDC HMWF

Reg. #: HOCANM107245654 aAa: 342561 DMS: 246,456  
 Born: 09/03/2011 Kappa Casein: AA Beta Casein: A1A2

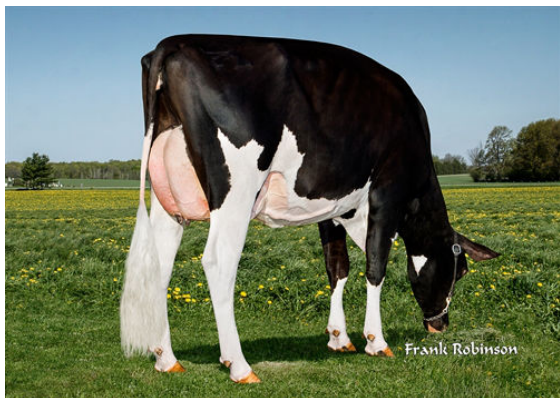
PRODUCTION		1153 Herds	4730 Dtrs	98% Rel	MACE-G / 04-26	
Milk lbs	Fat lbs				Protein lbs	Protein %
1096	-28			-0.27	8	-0.10
NM\$ -199	CM\$ -237			FM\$ -112	GM\$ -238	DWP\$
Feed Efficiency	RFI			Feed Saved	Methane Efficiency	Milking Speed
-33	-11			58		6.71
Daughter Average (ME) Milk <b>26,796 lbs</b> Fat <b>949 lbs</b> Protein <b>827 lbs</b>						

HEALTH & REPRODUCTION			Immunity 89	
Productive Life	-1.5	Calf Immunity	95	
Somatic Cell Score	3.13	Cow Conception Rate	-3.3	
Daughter Pregnancy Rate	-2.1	Heifer Conception Rate	-2.0	
Livability	-0.9	Sire Calving Ease	1.4%	95% Rel
Heifer Livability	0.4	Daughter Calving Ease	2.1%	91% Rel
Fertility Index	-2.1	Sire Stillbirth	3.9%	
		Daughter Stillbirth	6.4%	

CONFORMATION		271 Herds	460 Dtrs	95% Rel	MACE / 04-26	
PTAT	-0.34	Body Composite	-0.43			
Udder Composite	-1.11	Dairy Composite	0.12			
Feet & Legs Composite	0.49					



MS BRENHAVEN LAUMAN 6088



FERN-OAK LAUMAN 24249



FERN-OAK LAUMAN 24249