



DYMENTHOLM S SYMPATICO \*RC  
 VAL-BISSON SHOTTLE IMELDA EX-91-6YR-CAN 11\*  
 PICSTON SHOTTLE  
 VAL-BISSON GOLDWYN MAYA VG-88-6YR-CAN 41\*  
 BRAEDAILE GOLDWYN  
 VAL-BISSON FINLEY DREAM VG-87-6YR-CAN 14\*

**GTPI 2087**

GP-CAN TD RC TL TY TV HH1F HH2F HH3C HH4F HH5F HH6F HCDF HMWF

Reg. #: HOCANM108109390 aAa: 312546 DMS: 135  
 Born: 05/18/2013 Kappa Casein: AB Beta Casein: A1A2

| PRODUCTION      |           | 1589 Herds | 3408 Dtrs | 99% Rel    | MACE-G / 12-24     |            |
|-----------------|-----------|------------|-----------|------------|--------------------|------------|
| Milk lbs        | Fat lbs   |            |           | Fat %      | Protein lbs        | Protein %  |
| -962            | 25        |            |           | +0.25      | -20                | +0.04      |
| NM\$ -136       | CM\$ -124 |            |           | FM\$ -187  | GM\$ -148          | DWP\$ -283 |
| Feed Efficiency | RFI       |            |           | Feed Saved | Methane Efficiency |            |
| -40             | 193       |            |           | -397       | 96                 |            |

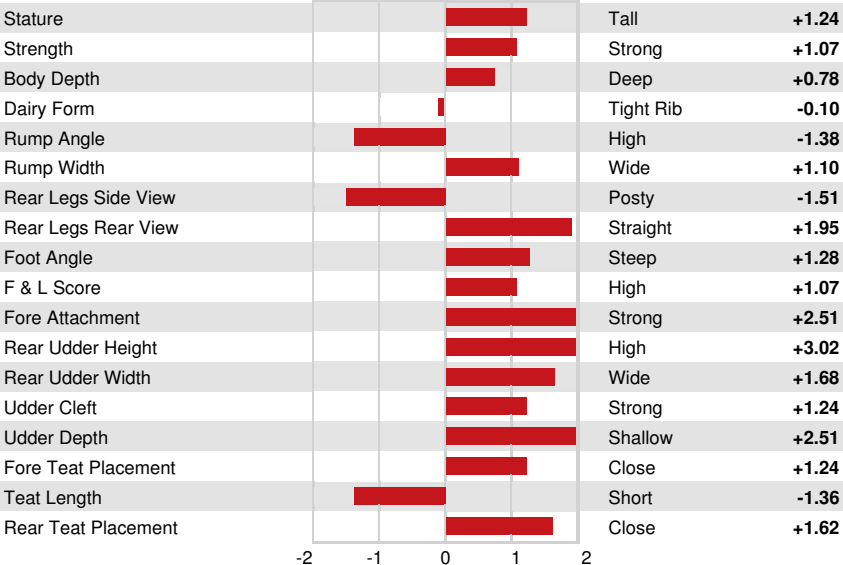
Daughter Average (ME) Milk **23,381 lbs** Fat **973 lbs** Protein **751 lbs**

**HEALTH & REPRODUCTION** Immunity **90**

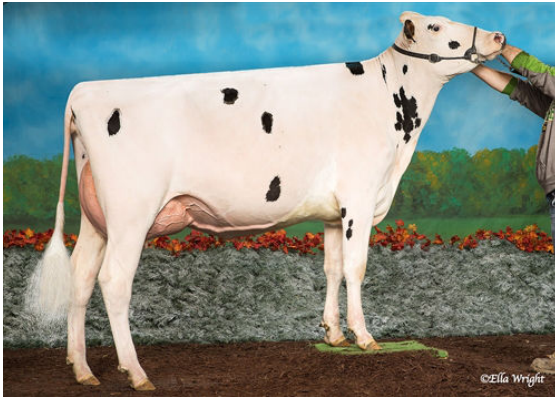
|                         |      |                        |              |
|-------------------------|------|------------------------|--------------|
| Productive Life         | -1.5 | Calf Immunity          | 99           |
| Somatic Cell Score      | 2.69 | Cow Conception Rate    | -2.5         |
| Daughter Pregnancy Rate | -0.6 | Heifer Conception Rate | 2.1          |
| Livability              | -3.3 | Sire Calving Ease      | 2.5% 96% Rel |
| Heifer Livability       | 0.4  | Daughter Calving Ease  | 3.9% 94% Rel |
| Fertility Index         | -0.7 | Sire Stillbirth        | 5.6%         |
|                         |      | Daughter Stillbirth    | 5.9%         |

**CONFORMATION** 1085 Herds 2056 Dtrs 98% Rel MACE / 12-24

|                       |      |                 |       |
|-----------------------|------|-----------------|-------|
| PTAT                  | 1.76 | Body Composite  | 1.35  |
| Udder Composite       | 2.07 | Dairy Composite | -0.13 |
| Feet & Legs Composite | 1.04 |                 |       |



GASTLOSEN INTEGRAL LAYLANI



SUNNYHOME INTEGRAL MARCIE



DESLACS INTEGRAL ANARICK