



AMIGHETTI NUMERO UNO
 REGANCREST DORCY BENISHEY VG-85-2YR-USA
 COYNE-FARMS DORCY
 REGANCREST M BENISHA VG-87-4YR-USA
 REGANCREST-HHF MAC
 REGANCREST BREESHIA

GTPI 2455

TD TR TL XIF TY MWT TV HH1F HH2F HH3F HH4F HH5F HH6F HCDF HMWF

Reg. #: HOUSAM72090535 aAa: 243651 DMS: 246
 Born: 01/09/2013 Kappa Casein: AE Beta Casein: A1A2

PRODUCTION 730 Herds 2935 Dtrs 99% Rel MACE-G / 04-26

Milk lbs -528	Fat lbs -8	Fat % +0.05	Protein lbs -27	Protein % -0.04
NM\$ -116	CM\$ -133	FM\$ -77	GM\$ -82	DWP\$ -49
Feed Efficiency -82	RFI 8	Feed Saved -160	Methane Efficiency 106	Milking Speed 6.92

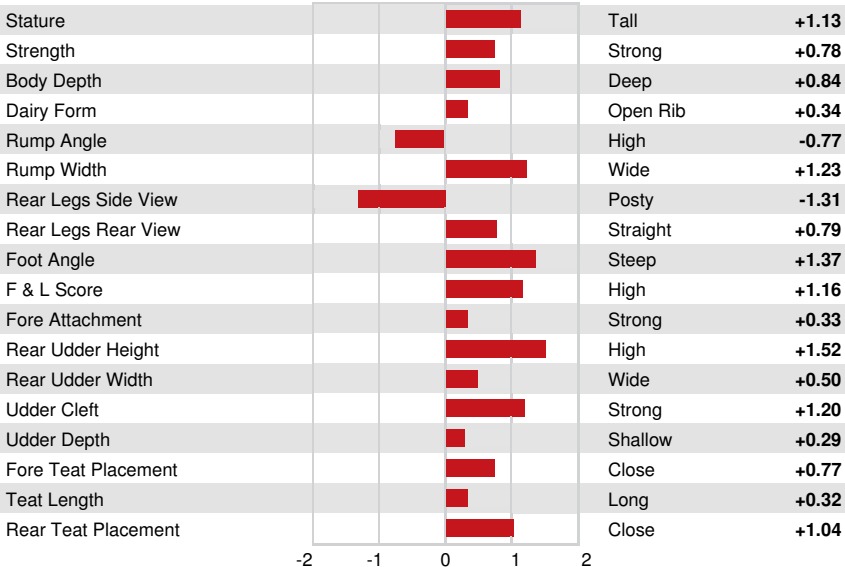
Daughter Average (ME) Milk **25,641 lbs** Fat **1,032 lbs** Protein **808 lbs**

HEALTH & REPRODUCTION Immunity **96**

Productive Life	1.1	Calf Immunity	95
Somatic Cell Score	3.06	Cow Conception Rate	3.0
Daughter Pregnancy Rate	3.5	Heifer Conception Rate	2.3
Livability	1.4	Sire Calving Ease	1.7% 97% Rel
Heifer Livability	0.6	Daughter Calving Ease	2.5% 94% Rel
Fertility Index	2.8	Sire Stillbirth	4.2%
		Daughter Stillbirth	5.3%

CONFORMATION 394 Herds 1041 Dtrs 98% Rel MACE / 04-26

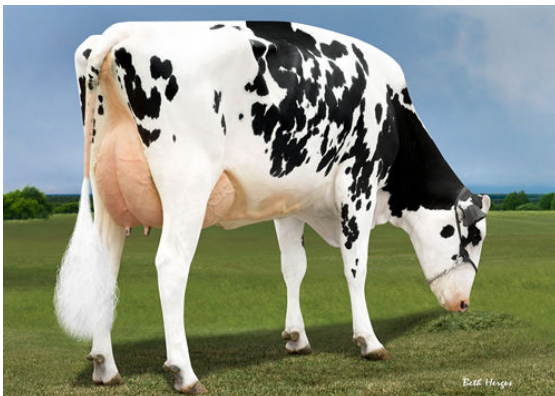
PTAT	1.05	Body Composite	0.94
Udder Composite	0.56	Dairy Composite	0.30
Feet & Legs Composite	0.88		



BRIGHAM DAUGHTER GROUP
 MEADOWOOD BRIGHAM CAILY and MEADOWOOD BRIGHAM CAYLA



THEATER



DANHOF BRIGHAM LISA