



COYNE-FARMS JABIR
 VELTHUIS SUPERSONIC ALYSSA VG-87-2YR-CAN 9*
 MISTY SPRINGS SUPERSONIC
 VELTHUIS SG MOM ALESIA VG-87-2YR-CAN 23*
 LONG-LANGS OMAN OMAN
 ALLYNDALE-I GOLDWYN ALBANY VG-87-2YR-CAN 14*

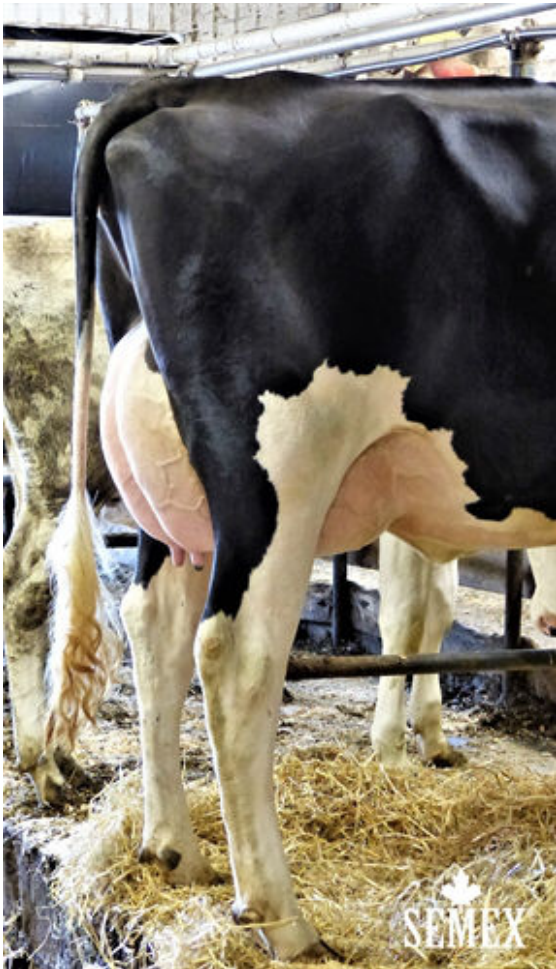
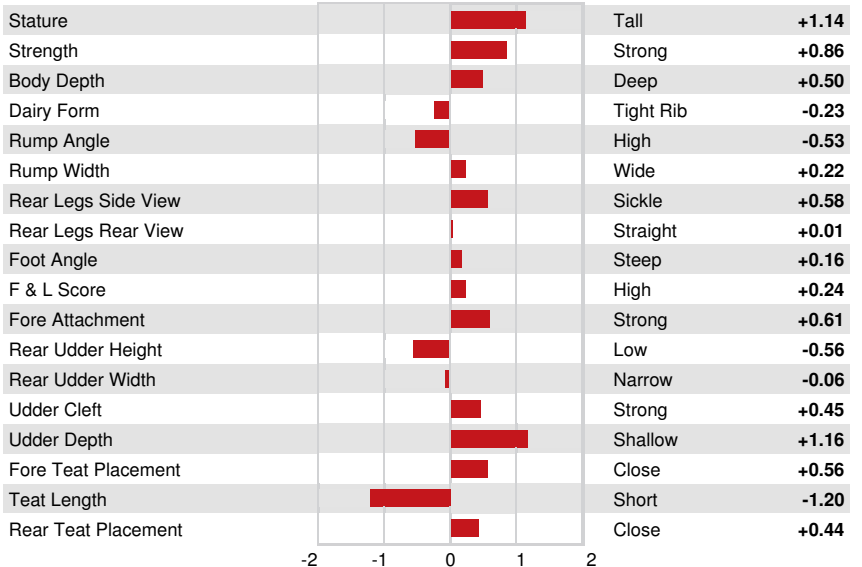
GTPI 2534

EX-90-CAN TD TM TR TL TY MWT TV 99%-I HH1F HH2F HH3F HH4F HH5F HH6F HCDF HMWF
 Reg. #: HOCANM108798853 aAa: 345126 DMS: 246
 Born: 01/20/2014 Kappa Casein: BB Beta Casein: A1A2

PRODUCTION		1449 Herds	6715 Dtrs	99% Rel	MACE-G / 08-24	
Milk lbs	Fat lbs	Fat %	Protein lbs	Protein %		
400	50	+0.13	26	+0.05		
NM\$ 530	CM\$ 545	FM\$ 454	GM\$ 550	DWP\$ 516		
Feed Efficiency	RFI	Feed Saved	Methane Efficiency			
109	-41	-121	95			
Daughter Average (ME)		Milk 26,980 lbs	Fat 1,076 lbs	Protein 874 lbs		

HEALTH & REPRODUCTION			Immunity	104
Productive Life	3.4	Calf Immunity	103	
Somatic Cell Score	2.67	Cow Conception Rate	2.7	
Daughter Pregnancy Rate	2.7	Heifer Conception Rate	0.0	
Livability	2.5	Sire Calving Ease	1.8%	98% Rel
Heifer Livability	0.7	Daughter Calving Ease	1.7%	95% Rel
Fertility Index	2.2	Sire Stillbirth	6.1%	
		Daughter Stillbirth	4.8%	

CONFORMATION		835 Herds	2689 Dtrs	95% Rel	MACE / 08-24	
PTAT	0.48	Body Composite	1.07			
Udder Composite	-0.03	Dairy Composite	-0.25			
Feet & Legs Composite	-0.07					



GUSNIS ARMOUR MACY