



S-S-I MONTROSS JETT  
 STANTONS MCCUTCHEN 1174 AGREE VG-88-4YR-CAN 17\*  
 DE-SU BKM MCCUTCHEN 1174  
 STANTONS OBSERVER EXTREME VG-85-2YR-CAN 11\*  
 DE-SU OBSERVER  
 WABASH-WAY BOL ELIZABETH VG-87-2YR-USA DOM 19\*

**GTPI 2474**

VG-CAN TD TR TL TY TV 99%-I HH1F HH2F HH3F HH4F HH5C HH6F HCDF HMWF

Reg. #: HOCANM12549522 aAa: 345216 DMS: 345,456  
 Born: 07/24/2016 Kappa Casein: BE Beta Casein: A1A1

**PRODUCTION** 368 Herds 901 Dtrs 98% Rel MACE-G / 04-26

Milk lbs <b>108</b>	Fat lbs <b>-8</b>	Fat % <b>-0.05</b>	Protein lbs <b>2</b>	Protein % <b>-0.01</b>
NM\$ <b>-145</b>	CM\$ <b>-144</b>	FM\$ <b>-144</b>	GM\$ <b>-127</b>	DWP\$ <b>-64</b>
Feed Efficiency <b>-34</b>	RFI <b>51</b>	Feed Saved <b>-171</b>	Methane Efficiency <b>107</b>	Milking Speed <b>6.90</b>

Daughter Average (ME) Milk **26,244 lbs** Fat **1,062 lbs** Protein **846 lbs**

**HEALTH & REPRODUCTION** Immunity **106**

Productive Life	<b>-1.0</b>	Calf Immunity	<b>104</b>
Somatic Cell Score	<b>2.88</b>	Cow Conception Rate	<b>0.5</b>
Daughter Pregnancy Rate	<b>0.6</b>	Heifer Conception Rate	<b>0.8</b>
Livability	<b>-2.4</b>	Sire Calving Ease	<b>1.5%</b> 95% Rel
Heifer Livability	<b>-0.6</b>	Daughter Calving Ease	<b>1.8%</b> 89% Rel
Fertility Index	<b>0.7</b>	Sire Stillbirth	<b>4.2%</b>
		Daughter Stillbirth	<b>4.9%</b>

**CONFORMATION** 162 Herds 281 Dtrs 88% Rel MACE / 04-26

PTAT	<b>0.27</b>	Body Composite	<b>0.74</b>
Udder Composite	<b>0.52</b>	Dairy Composite	<b>-0.95</b>
Feet & Legs Composite	<b>0.12</b>		

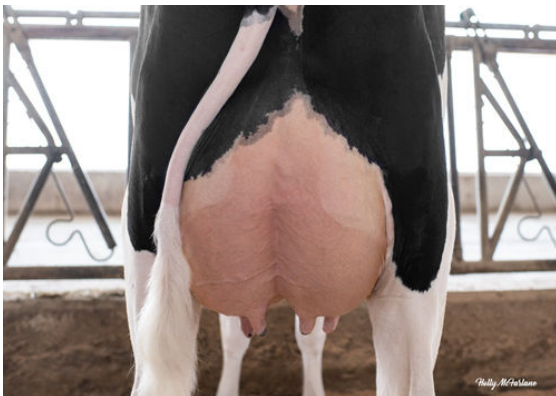
Stature		Tall	<b>+0.48</b>
Strength		Strong	<b>+0.35</b>
Body Depth		Shallow	<b>-0.17</b>
Dairy Form		Tight Rib	<b>-0.80</b>
Rump Angle		Sloped	<b>+1.36</b>
Rump Width		Wide	<b>+0.06</b>
Rear Legs Side View		Posty	<b>-1.78</b>
Rear Legs Rear View		Straight	<b>+0.54</b>
Foot Angle		Steep	<b>+1.24</b>
F & L Score		High	<b>+0.13</b>
Fore Attachment		Strong	<b>+1.16</b>
Rear Udder Height		High	<b>+0.50</b>
Rear Udder Width		Narrow	<b>-0.67</b>
Udder Cleft		Strong	<b>+0.33</b>
Udder Depth		Shallow	<b>+2.14</b>
Fore Teat Placement		Close	<b>+0.43</b>
Teat Length		Short	<b>-1.81</b>
Rear Teat Placement		Close	<b>+0.18</b>



STANTONS FOUNTAIN DRINK



STANTONS FOUNTAIN RESEARCH



STANTONS FOUNTAIN RESEARCH