



MAVERICK-I CRUSH

OH-RIVER-SYC MOGAL BRYLAN VG-87-4YR-USA

MOUNTFIELD SSI DCY MOGUL

OH-RIVER-SYC MRDN BILLIE EX-91-4YR-USA

SULLY HART MERIDIAN

SANDY-VALLEY ATWD BARBIE EX-91-5YR-USA

GTPI 2129

EX-92-CAN TD TR TL TY MWT TV 99%-I HH1F HH2F HH3F HH4F HH5C HH6F HCDF HMWF

Reg. #: HO840M3135145001

aAa: 324165

DMS: 126

Born: 03/10/2017

Kappa Casein: BE

Beta Casein: A1A2

PRODUCTION 2717 Herds 7356 Dtrs 99% Rel MACE-G / 08-24

| | | | | |
|-------------------------------|-----------------------|-------------------------|----------------------------------|---------------------------|
| Milk lbs 435 | Fat lbs -19 | Fat % -0.14 | Protein lbs 7 | Protein % -0.03 |
| NM\$ -53 | CM\$ -55 | FM\$ -27 | GM\$ -77 | DWP\$ -283 |
| Feed Efficiency -10 | RFI -24 | Feed Saved 66 | Methane Efficiency 104 | |

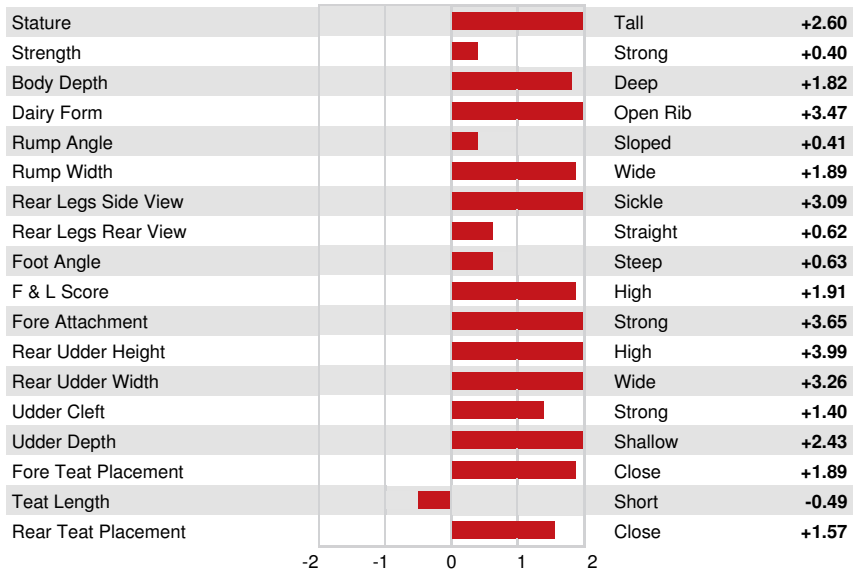
Daughter Average (ME) Milk **25,915 lbs** Fat **995 lbs** Protein **829 lbs**

HEALTH & REPRODUCTION Immunity **92**

| | | | |
|-------------------------|-------------|------------------------|---------------------|
| Productive Life | 0.3 | Calf Immunity | 105 |
| Somatic Cell Score | 2.93 | Cow Conception Rate | -0.6 |
| Daughter Pregnancy Rate | -1.6 | Heifer Conception Rate | 1.9 |
| Livability | -5.4 | Sire Calving Ease | 3.2% 97% Rel |
| Heifer Livability | 0.8 | Daughter Calving Ease | 2.8% 95% Rel |
| Fertility Index | -0.6 | Sire Stillbirth | 8.0% |
| | | Daughter Stillbirth | 7.5% |

CONFORMATION 1925 Herds 4979 Dtrs 99% Rel MACE / 08-24

| | | | |
|-----------------------|-------------|-----------------|--------------|
| PTAT | 3.26 | Body Composite | -0.28 |
| Udder Composite | 2.66 | Dairy Composite | 1.64 |
| Feet & Legs Composite | 0.94 | | |



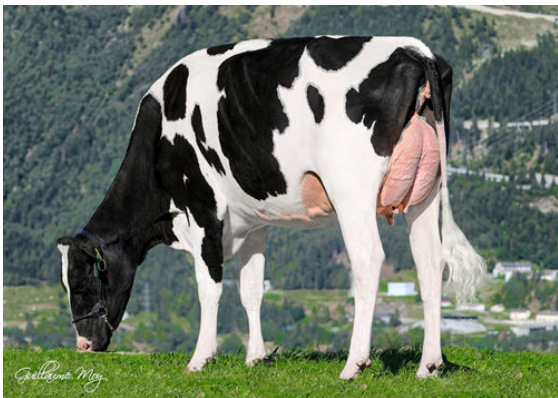
PANDA PURE GOLD RED

DAUGHTER



HOWARD-VIEW CRSBUL DISCODANCER

DAUGHTER



DG CRUSHABULL ATLANTIS

DAUGHTER