



PROGENESIS TOPNOTCH  
 SILVERRIDGE V DUKE EMAIL EX-90-2E-CAN 9\*  
 S-S-I MONTROSS DUKE  
 SILVERRIDGE V SSHOT EARRING EX-90-6YR-CAN 10\*  
 COGENT SUPERSHOT  
 SILVERRIDGE V MUNITION EARWIG EX-90-5E-CAN 6\*

**GTPI 3190**

TD TM TR TL TY MWT TV 99%-I HH1F HH2F HH3F HH4F HH5F HH6F HCDF HMWF

Reg. #: HOCANM12857528 aAa: 534126 DMS: 345  
 Born: 04/18/2018 Kappa Casein: AB Beta Casein: A2A2

**PRODUCTION** 868 Herds 5409 Dtrs 99% Rel MACE-G / 04-25

Milk lbs <b>804</b>	Fat lbs <b>77</b>	Fat % <b>+0.16</b>	Protein lbs <b>42</b>	Protein % <b>+0.06</b>
NM\$ <b>628</b>	CM\$ <b>659</b>	FM\$ <b>559</b>	GM\$ <b>583</b>	DWP\$ <b>506</b>
Feed Efficiency <b>174</b>	RFI <b>136</b>	Feed Saved <b>-316</b>	Methane Efficiency <b>106</b>	

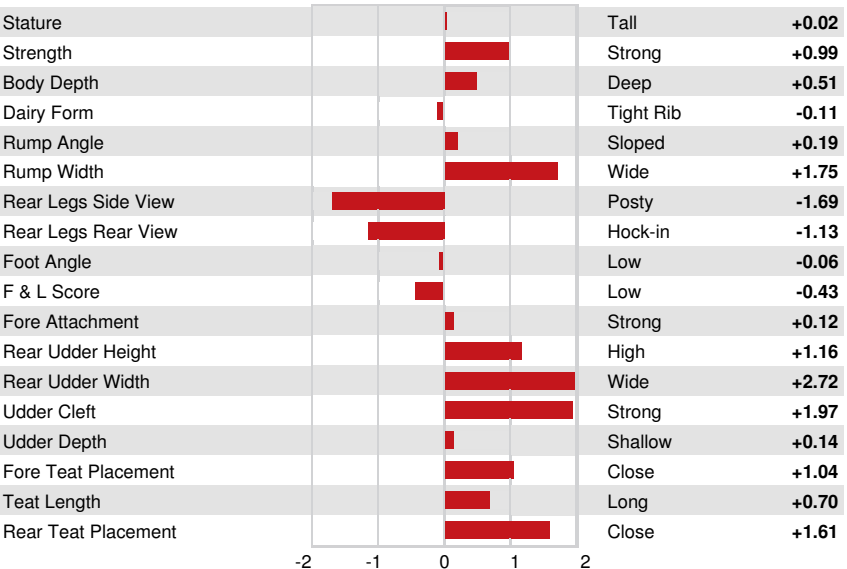
Daughter Average (ME) Milk **27,325 lbs** Fat **1,203 lbs** Protein **919 lbs**

**HEALTH & REPRODUCTION** Immunity **109**

Productive Life	<b>4.1</b>	Calf Immunity	<b>105</b>
Somatic Cell Score	<b>2.71</b>	Cow Conception Rate	<b>1.7</b>
Daughter Pregnancy Rate	<b>0.4</b>	Heifer Conception Rate	<b>1.3</b>
Livability	<b>0.3</b>	Sire Calving Ease	<b>2.2%</b> 99% Rel
Heifer Livability	<b>0.1</b>	Daughter Calving Ease	<b>2.0%</b> 97% Rel
Fertility Index	<b>1.2</b>	Sire Stillbirth	<b>6.5%</b>
		Daughter Stillbirth	<b>5.3%</b>

**CONFORMATION** 508 Herds 2279 Dtrs 99% Rel MACE / 04-25

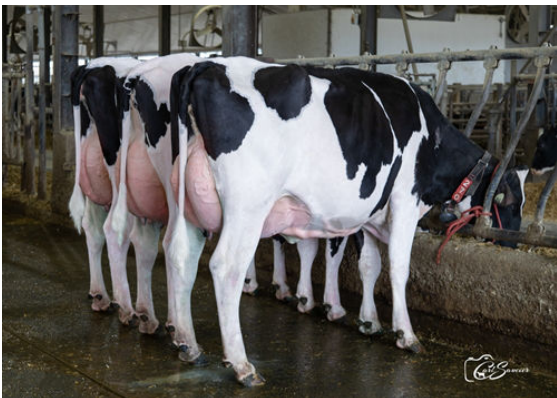
PTAT	<b>0.58</b>	Body Composite	<b>1.11</b>
Udder Composite	<b>1.20</b>	Dairy Composite	<b>-0.13</b>
Feet & Legs Composite	<b>-0.67</b>		



PROGENESIS EINSTEIN WIMZY  
 DAUGHTER



HAH ALICE  
 DAUGHTER



EINSTEIN DAUGHTER GROUP  
 L to R - BEAUCOISE EINSTEIN ELIAS, BEAUCOISE EINSTEIN PIKKY,  
 BEAUCOISE EINSTEIN PIRKI