



PROGENESIS POSITIVE  
 WESTCOAST IMAX SKY23037 5915 GP-83-2YR-CAN 2\*  
 SILVERRIDGE V IMAX  
 MS SOFIAS DELTA SKY VG-85-3YR-CAN 2\*  
 MR MOGUL DELTA 1427  
 SNOWBIZ SYMPATICO SOFIA VG-85-2YR-USA 1\*

**GTPI 2754**

TD RC TL TY MWT TV 99%-I HH1F HH2F HH3F HH4F HH5F HH6F HCDF HMWF

Reg. #: HOCANM13127779 aAa: 423561 DMS: 345,135  
 Born: 10/29/2018 Kappa Casein: AA Beta Casein: A1A2

**PRODUCTION** 38 Herds 58 Dtrs 89% Rel MACE-G / 08-24

Milk lbs <b>1605</b>	Fat lbs <b>93</b>	Fat % <b>+0.12</b>	Protein lbs <b>62</b>	Protein % <b>+0.04</b>
NM\$ <b>745</b>	CM\$ <b>753</b>	FM\$ <b>678</b>	GM\$ <b>681</b>	DWP\$ <b>526</b>
Feed Efficiency <b>256</b>	RFI <b>-116</b>	Feed Saved <b>34</b>	Methane Efficiency <b>96</b>	

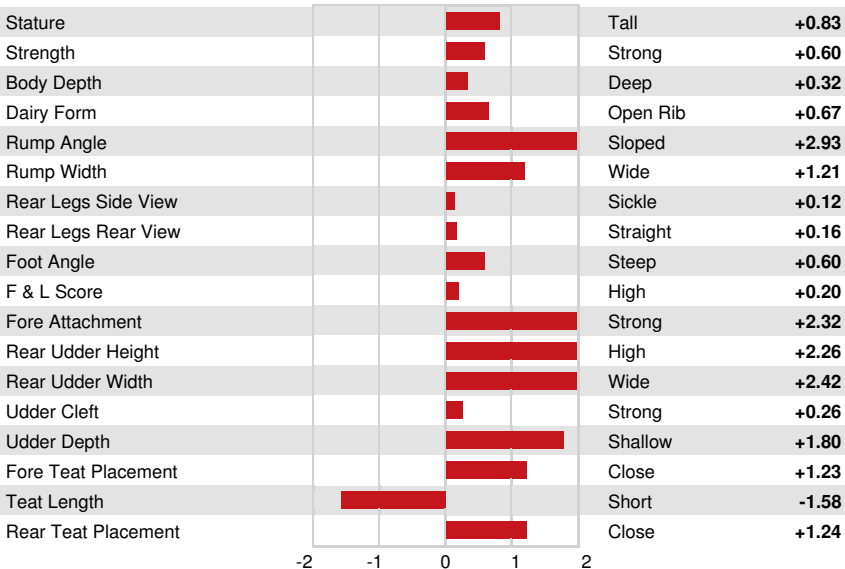
Daughter Average (ME) Milk **26,729 lbs** Fat **1,167 lbs** Protein **877 lbs**

**HEALTH & REPRODUCTION** Immunity **90**

Productive Life	<b>1.4</b>	Calf Immunity	<b>92</b>
Somatic Cell Score	<b>2.95</b>	Cow Conception Rate	<b>-2.8</b>
Daughter Pregnancy Rate	<b>-3.2</b>	Heifer Conception Rate	<b>0.2</b>
Livability	<b>-1.9</b>	Sire Calving Ease	<b>2.2%</b> 73% Rel
Heifer Livability	<b>-0.4</b>	Daughter Calving Ease	<b>2.1%</b> 70% Rel
Fertility Index	<b>-2.1</b>	Sire Stillbirth	<b>4.9%</b>
		Daughter Stillbirth	<b>4.4%</b>

**CONFORMATION** 15 Herds 20 Dtrs 83% Rel MACE / 08-24

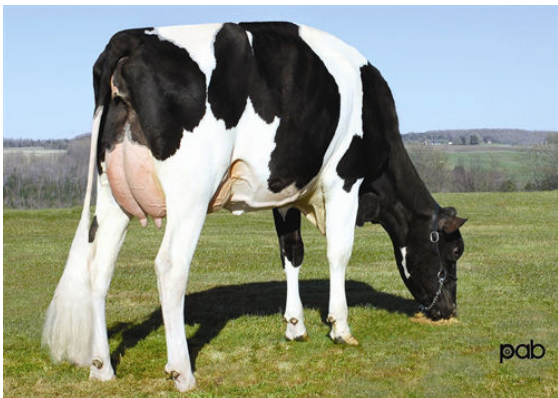
PTAT	<b>1.04</b>	Body Composite	<b>0.54</b>
Udder Composite	<b>1.82</b>	Dairy Composite	<b>0.40</b>
Feet & Legs Composite	<b>0.04</b>		



MS SOFIAS DELTA SKY  
GRANDDAM



GEN-I-BEQ SNOWMAN SUMMER  
FOURTH DAM



GEN-I-BEQ BOLTON SECRETLY  
FIFTH DAM