



PEAK HOTJOB

PROGENESIS GTEE CABERNET RED VG-87-4YR-CAN 1*

WESTCOAST GUARANTEE

HOLLENDALE JEDI CRIM-RED VG-88-5YR-USA 3*

S-S-I MONTROSS JEDI

RI-VAL-RE TG CRIMSON-RED VG-86-2YR-USA

GTPI 3015

TD TR TL VRC TY MWT TV 99%-I HH1F HH2F HH3F HH4F HH5F HH6F HCDF HMWF

Reg. #: HOCANM13567622

aAa: 432561

DMS: 561,135

Born: 11/15/2019

Kappa Casein: AB

Beta Casein: A2A2

PRODUCTION 311 Herds 852 Dtrs 97% Rel MACE-G / 04-26

Milk lbs 1048	Fat lbs 53	Fat % +0.04	Protein lbs 36	Protein % +0.01
NM\$ 308	CM\$ 313	FM\$ 294	GM\$ 288	DWP\$ 462
Feed Efficiency 135	RFI 9	Feed Saved -186	Methane Efficiency 99	Milking Speed 7.19

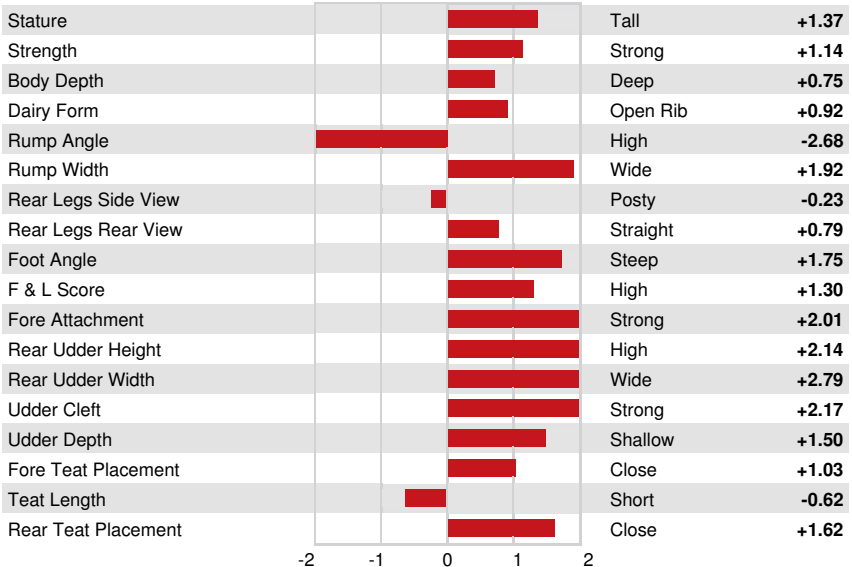
Daughter Average (ME) Milk **27,863 lbs** Fat **1,252 lbs** Protein **935 lbs**

HEALTH & REPRODUCTION Immunity **103**

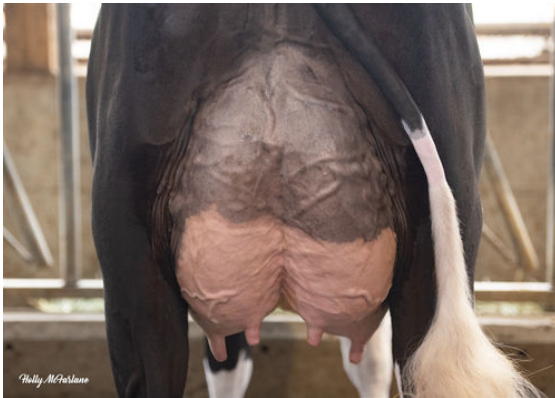
Productive Life	-0.8	Calf Immunity	95
Somatic Cell Score	3.03	Cow Conception Rate	-1.6
Daughter Pregnancy Rate	-1.8	Heifer Conception Rate	-0.4
Livability	-3.3	Sire Calving Ease	1.3% 91% Rel
Heifer Livability	0.4	Daughter Calving Ease	1.3% 90% Rel
Fertility Index	-1.1	Sire Stillbirth	4.0%
		Daughter Stillbirth	3.3%

CONFORMATION 221 Herds 574 Dtrs 96% Rel MACE / 04-26

PTAT	2.16	Body Composite	1.09
Udder Composite	1.85	Dairy Composite	1.00
Feet & Legs Composite	1.00		



PROGENESIS CHAMPION PALAZZO
DAUGHTER



PROGENESIS CHAMPION PALAZZO
DAUGHTER



PROGENESIS CHAMPION TIANNA
DAUGHTER