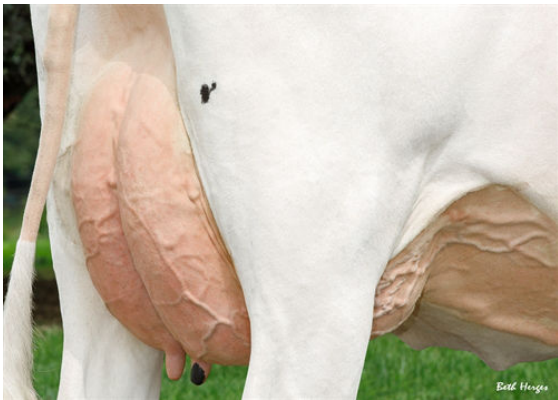




LADYS-MANOR GRNT OOHM
DAM



LADYS-MANOR GRNT OOHM
DAM



LADYS-MANOR GRNT OOHM
DAM



NO-FLA MERRIMAC
LADYS-MANOR GRNT OOHM VG-85-3YR-USA DOM
PROGENESIS GRANITE
LADYS-MANOR MILTN OOMPA
DE-SU MILLINGTON 12074
LADYS-MANOR DORCY ODA EX-93-2E-USA DOM

GTPI 2856

TD TR TL TY MWC TV 99%-I HH1F HH2F HH3F HH4F HH5F HH6F HCDF HMWC

Reg. #: HO840M3200270308 aAa: 432516 DMS: 561,135
Born: 07/07/2019 Kappa Casein: AB Beta Casein: A1A1

PRODUCTION 66 Herds 531 Dtrs 98% Rel MACE-G / 12-24

Milk lbs 309	Fat lbs 102	Fat % +0.35	Protein lbs 39	Protein % +0.11
NM\$ 810	CM\$ 833	FM\$ 660	GM\$ 734	DWP\$ 931
Feed Efficiency 211	RFI 20	Feed Saved -135	Methane Efficiency 109	

Daughter Average (ME) Milk **26,886 lbs** Fat **1,195 lbs** Protein **901 lbs**

HEALTH & REPRODUCTION Immunity **102**

Productive Life	4.0	Calf Immunity	95
Somatic Cell Score	2.66	Cow Conception Rate	-0.9
Daughter Pregnancy Rate	-1.3	Heifer Conception Rate	-0.5
Livability	1.6	Sire Calving Ease	1.4% 95% Rel
Heifer Livability	-0.1	Daughter Calving Ease	2.0% 81% Rel
Fertility Index	-0.9	Sire Stillbirth	5.1%
		Daughter Stillbirth	4.3%

CONFORMATION 27 Herds 103 Dtrs 93% Rel MACE / 12-24

PTAT	1.32	Body Composite	0.76
Udder Composite	1.86	Dairy Composite	-0.02
Feet & Legs Composite	0.75		

