



CALVING EASE

SCHOENE-KUH ROBERT  
 PROGENESIS POSITIVE MAINE GP-83-2YR-CAN 1\*  
 PROGENESIS POSITIVE  
 PROGENESIS JEDI MENACE EX-90-4E-CAN  
 S-S-I MONTROSS JEDI  
 PEAK BOMBERO MAXIMA VG-87-6YR-USA DOM

**GTPI 2830**

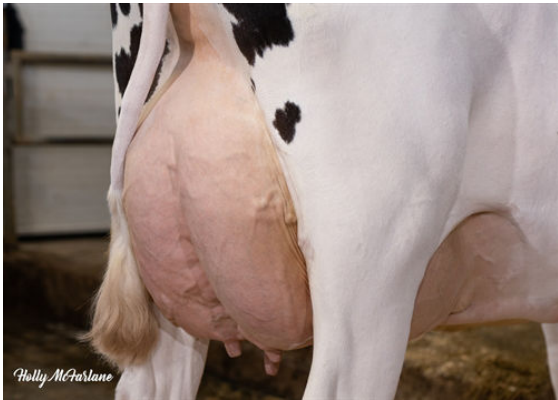
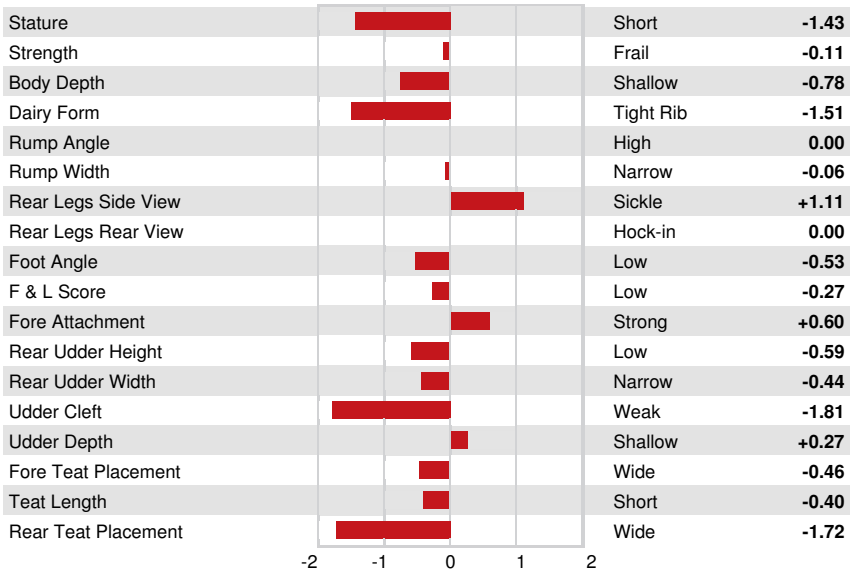
TD TR TL TY MWT TV 99%-I HH1F HH2F HH3F HH4F HH5F HH6F HCDF HMWF

Reg. #: HOCANM13567701 aAa: 432561 DMS: 345,135  
 Born: 12/04/2019 Kappa Casein: BB Beta Casein: A1A2

PRODUCTION		26 Herds	149 Dtrs	91% Rel	MACE-G / 04-26	
Milk lbs	Fat lbs				Protein lbs	Protein %
-236	33			+0.16	11	+0.07
NM\$ 431	CM\$ 461			FM\$ 362	GM\$ 432	DWP\$ 450
Feed Efficiency	RFI			Feed Saved	Methane Efficiency	Milking Speed
89	-95			57	100	7.05

HEALTH & REPRODUCTION			Immunity 108	
Productive Life	3.3	Calf Immunity	99	
Somatic Cell Score	2.75	Cow Conception Rate	2.5	
Daughter Pregnancy Rate	1.3	Heifer Conception Rate	3.4	
Livability	2.7	Sire Calving Ease	1.1%	71% Rel
Heifer Livability	-0.4	Daughter Calving Ease	1.3%	70% Rel
Fertility Index	2.1	Sire Stillbirth	3.5%	
		Daughter Stillbirth	3.2%	

CONFORMATION		13 Herds	35 Dtrs	83% Rel	MACE / 04-26	
PTAT	-0.39	Body Composite	0.23			
Udder Composite	-0.06	Dairy Composite	-1.91			
Feet & Legs Composite	0.05					



PROGENESIS JEDI MENACE  
 GRANDDAM



PROGENESIS JEDI MENACE  
 GRANDDAM



PEAK BOMBERO MAXIMA  
 THIRD DAM