



PEAK JARVIS
 PROGENESIS RANGER KAYLYNN VG-88-3YR-CAN
 3STAR OH RANGER RED
 DULET D-LAMBDA KATRINA EX-90-5YR-CAN 6*
 FARNEAR DELTA-LAMBDA
 DULET DIAMOND KARVY EX-90-5E-CAN 10*

GTPI 2944

TD TR TL TY MWT TV 99%-I HH1F HH2F HH3F HH4F HH5F HH6F HCDF HMWF

Reg. #: HOCANM14567312 aAa: 243165 DMS:
 Born: 09/05/2023 Kappa Casein: AA Beta Casein: A2A2

PRODUCTION G Herds G Dtrs 81% Rel CDCB-G / 04-26

Milk lbs 335	Fat lbs 39	Fat % +0.09	Protein lbs 18	Protein % +0.03
NM\$ 367	CM\$ 380	FM\$ 338	GM\$ 319	DWP\$ 266
Feed Efficiency 99	RFI 3	Feed Saved -33	Methane Efficiency 99	Milking Speed 6.93

HEALTH & REPRODUCTION

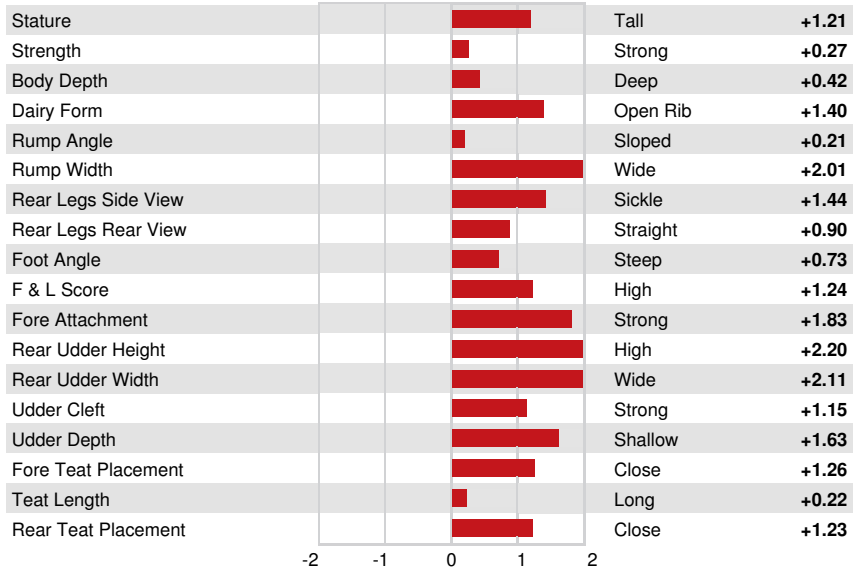
Immunity 101

Productive Life	2.6	Calf Immunity	97
Somatic Cell Score	2.92	Cow Conception Rate	-1.1
Daughter Pregnancy Rate	-1.0	Heifer Conception Rate	1.9
Livability	0.4	Sire Calving Ease	1.4% 62% Rel
Heifer Livability	0.0	Daughter Calving Ease	1.6% 60% Rel
Fertility Index	-0.3	Sire Stillbirth	3.9%
		Daughter Stillbirth	5.0%

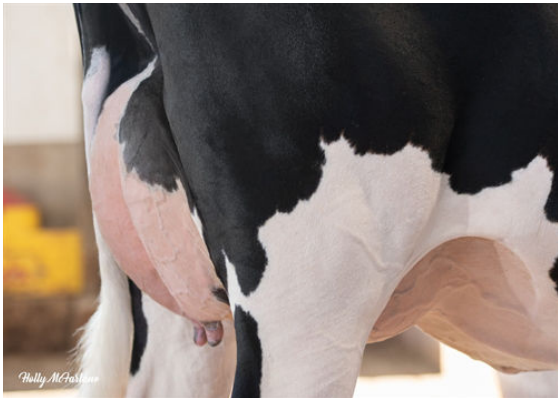
CONFORMATION

G Herds G Dtrs 79% Rel HAUSA-G / 04-26

PTAT	1.93	Body Composite	0.19
Udder Composite	1.69	Dairy Composite	0.66
Feet & Legs Composite	0.91		



PROGENESIS RANGER KAYLYNN
DAM



PROGENESIS RANGER KAYLYNN
DAM



DULET D-LAMBDA KATRINA
GRANDDAM