



DREWHOLME LEYHIGH PP
 PROGENESIS RANGER LAYLA VG-86-2YR-CAN
 3STAR OH RANGER RED
 PROGENESIS HIGHJUMP LEADER EX-93-4YR-CAN 3*
 AOT HIGHJUMP
 PEAK ROBERT LAINEY GP-80-2YR-CAN

GTPI 2917

TD TR TL TY MWT TV 99%-I HH1F HH2F HH3F HH4F HH5F HH6F HCDF HMWF

Reg. #: HOCANM14908630 aAa: 246315 DMS:
 Born: 01/15/2024 Kappa Casein: BB Beta Casein: A1A2

PRODUCTION		G Herds	G Dtrs	80% Rel	CDCB-G / 04-26	
Milk lbs	Fat lbs			Fat %	Protein lbs	Protein %
-6	64			+0.24	21	+0.08
NM\$ 345	CM\$ 379			FM\$ 268	GM\$ 311	DWP\$ 326
Feed Efficiency	RFI			Feed Saved	Methane Efficiency	Milking Speed
156	-90			3	111	6.79

HEALTH & REPRODUCTION Immunity 102

Productive Life	0.4	Calf Immunity	100
Somatic Cell Score	2.80	Cow Conception Rate	-1.8
Daughter Pregnancy Rate	-2.6	Heifer Conception Rate	-0.5
Livability	-3.0	Sire Calving Ease	1.7% 62% Rel
Heifer Livability	-0.5	Daughter Calving Ease	2.0% 57% Rel
Fertility Index	-2.1	Sire Stillbirth	4.2%
		Daughter Stillbirth	5.0%

CONFORMATION G Herds G Dtrs 79% Rel HAUSA-G / 04-26

PTAT	2.12	Body Composite	0.53
Udder Composite	1.24	Dairy Composite	1.42
Feet & Legs Composite	1.34		

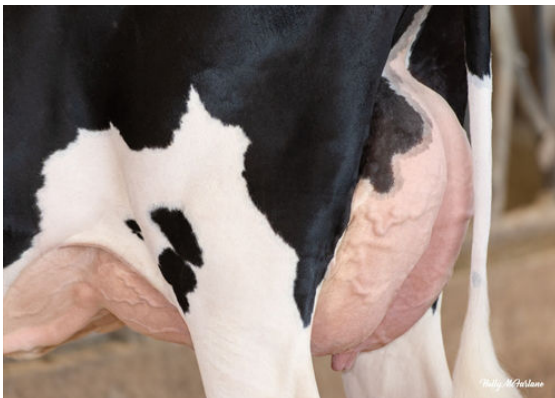
Stature		Tall	+1.19
Strength		Strong	+1.02
Body Depth		Deep	+1.37
Dairy Form		Open Rib	+1.74
Rump Angle		Sloped	+1.16
Rump Width		Wide	+1.33
Rear Legs Side View		Posty	-0.12
Rear Legs Rear View		Straight	+1.63
Foot Angle		Steep	+1.29
F & L Score		High	+1.46
Fore Attachment		Strong	+1.53
Rear Udder Height		High	+1.98
Rear Udder Width		Wide	+2.43
Udder Cleft		Strong	+0.60
Udder Depth		Shallow	+0.09
Fore Teat Placement		Close	+1.07
Teat Length		Long	+0.07
Rear Teat Placement		Close	+0.82



PROGENESIS HIGHJUMP LEADER
 GRANDDAM



PROGENESIS RANGER LAYLA
 DAM



PROGENESIS RANGER LAYLA
 DAM