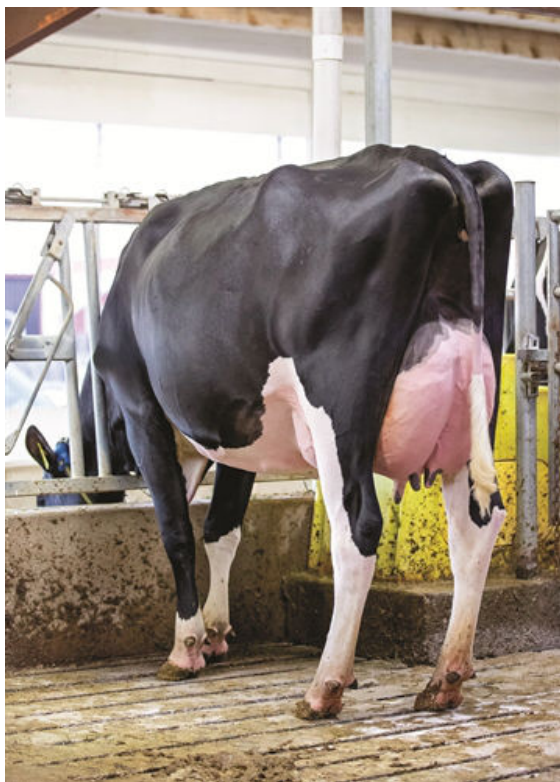




VOGUE LAZER-PP-RED
 SIEMERS PAR HANAN 36296 EX-90-3YR-USA
 SIEMERS RENGD PERFECT
 SIEMERS LSTR HANAN 33317 EX-91-4YR-USA
 CHERRY-LILY ZIP LUSTER-P
 SIEMERS DOC HANAN 28286 EX-92-3YR-USA GMD



SIEMERS PAR HANAN 36296

DAM



SIEMERS LSTR HANAN 33317

GRANDDAM

GTPI 2839

TD	RC	TL	TY	MWT	TV	99%-I	HH1F	HH2F	HH3F	HH4F	HH5F	HH6F	HCDF	HMWF			
Reg. #:			HO840M3267429861				aAa:			342156		DMS:				246,234	
Born:			10/05/2023				Kappa Casein:			BB		Beta Casein:				A2A2	

PRODUCTION		G Herds	G Dtrs	80% Rel	CDCB-G / 04-26				
Milk lbs	419	Fat lbs	29	Fat %	+0.04	Protein lbs	7	Protein %	-0.03
NM\$	84	CM\$	75	FM\$	105	GM\$	68	DWP\$	-150
Feed Efficiency	26	RFI	68	Feed Saved	-299	Methane Efficiency	103	Milking Speed	7.59

HEALTH & REPRODUCTION Immunity 100

Productive Life	0.6	Calf Immunity	100
Somatic Cell Score	3.07	Cow Conception Rate	0.2
Daughter Pregnancy Rate	0.3	Heifer Conception Rate	1.0
Livability	-2.4	Sire Calving Ease	1.5% 61% Rel
Heifer Livability	0.4	Daughter Calving Ease	1.3% 60% Rel
Fertility Index	0.6	Sire Stillbirth	3.9%
		Daughter Stillbirth	4.3%

CONFORMATION HAUSA-G / 04-26

	G Herds	G Dtrs	79% Rel		HAUSA-G / 04-26
PTAT		3.07	Body Composite		1.41
Udder Composite		1.61	Dairy Composite		2.11
Feet & Legs Composite		1.78			

