



PROGENESIS ANAHITA  
 WALNUTLAWN DESTINATION LOVE VG-86-2YR-CAN  
 BLONDIN DESTINATION  
 WALNUTLAWN SIDEKICK LUCILLE EX-91-3E-CAN 1\*  
 WALNUTLAWN SIDEKICK  
 FREUREHAVEN FGS LUCY VG-86-2YR-CAN 16\*

**GTPI 2585**

TD TR TL TY MWT TV 99%-I HH1F HH2F HH3F HH4F HH5F HH6F HCDF HMWF

Reg. #: HOCANM15070929 aAa: 234165 DMS:  
 Born: 07/16/2024 Kappa Casein: AA Beta Casein: A2A2

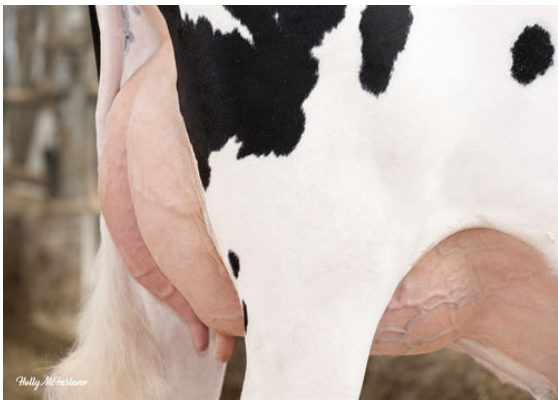
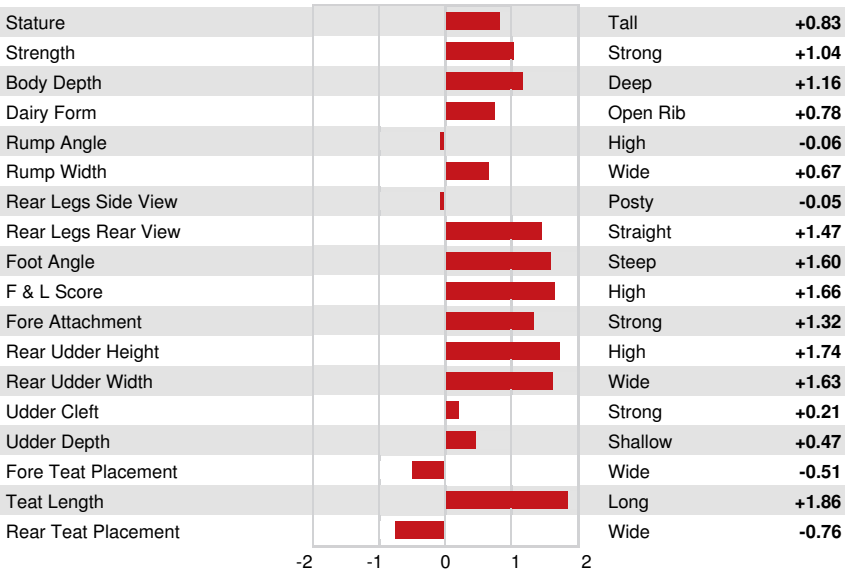
PRODUCTION		G Herds	G Dtrs	80% Rel	CDCB-G / 04-26				
Milk lbs	287	Fat lbs	19	Fat %	+0.03	Protein lbs	-1	Protein %	-0.04
NM\$	-16	CM\$	-29	FM\$	15	GM\$	-40	DWP\$	175
Feed Efficiency	12	RFI	38	Feed Saved	-164	Methane Efficiency	100	Milking Speed	6.48

**HEALTH & REPRODUCTION** Immunity 104

Productive Life	-0.5	Calf Immunity	108
Somatic Cell Score	2.97	Cow Conception Rate	-1.4
Daughter Pregnancy Rate	-0.7	Heifer Conception Rate	-0.2
Livability	-1.6	Sire Calving Ease	1.4% 62% Rel
Heifer Livability	0.4	Daughter Calving Ease	2.2% 58% Rel
Fertility Index	-0.9	Sire Stillbirth	4.5%
		Daughter Stillbirth	5.7%

**CONFORMATION** G Herds G Dtrs 79% Rel HAUSA-G / 04-26

PTAT	1.62	Body Composite	0.78
Udder Composite	0.81	Dairy Composite	0.68
Feet & Legs Composite	1.56		



WALNUTLAWN DESTINATION LOVE  
DAM



WALNUTLAWN DESTINATION LOVE  
DAM



FREUREHAVEN FGS LUCY  
THIRD DAM