



PROGENESIS ANAHITA
 PROGENESIS WC 14974 VG-85-3YR-CAN
 WESTCOAST LAMBEAU
 SHELAND PERFECT DAYBREAK EX-90-5YR-CAN 1*
 SIEMERS RENG D PERFECT
 SHELAND DUKE DAYLILY VG-85-2YR-USA

GTPI 2994

TD TR TL TY MWT TV 99%-I HH1F HH2F HH3F HH4F HH5F HH6F HCDF HMWF

Reg. #: HOCANM14890715 aAa: DMS:
 Born: 08/20/2024 Kappa Casein: AB Beta Casein: A2A2

PRODUCTION G Herds G Dtrs 80% Rel CDCB-G / 04-26

Milk lbs 811	Fat lbs 80	Fat % +0.17	Protein lbs 37	Protein % +0.04
NM\$ 344	CM\$ 360	FM\$ 304	GM\$ 313	DWP\$ 447
Feed Efficiency 178	RFI 73	Feed Saved -256	Methane Efficiency 104	Milking Speed 6.96

HEALTH & REPRODUCTION

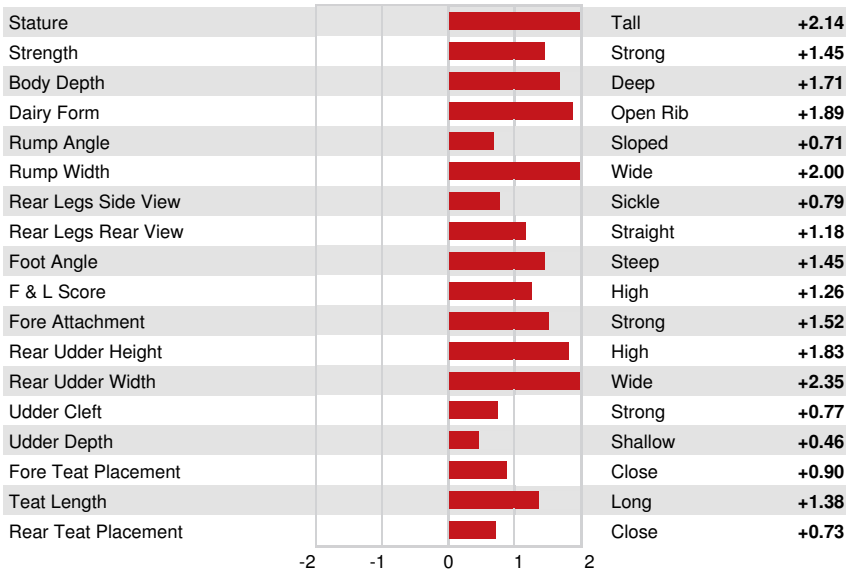
Immunity 95

Productive Life	-0.5	Calf Immunity	94
Somatic Cell Score	3.08	Cow Conception Rate	-1.6
Daughter Pregnancy Rate	-2.3	Heifer Conception Rate	1.8
Livability	-4.5	Sire Calving Ease	2.0% 62% Rel
Heifer Livability	0.0	Daughter Calving Ease	2.3% 58% Rel
Fertility Index	-1.1	Sire Stillbirth	4.7%
		Daughter Stillbirth	5.1%

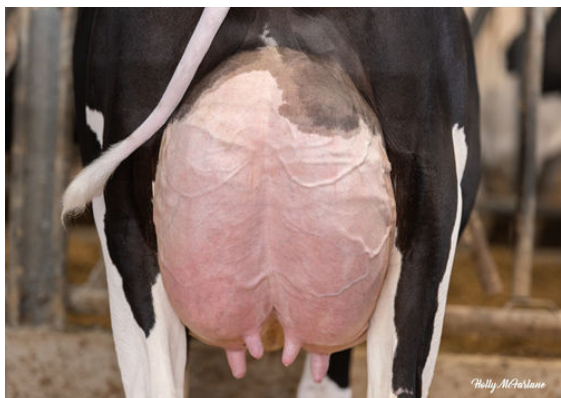
CONFORMATION

G Herds G Dtrs 78% Rel HAUSA-G / 04-26

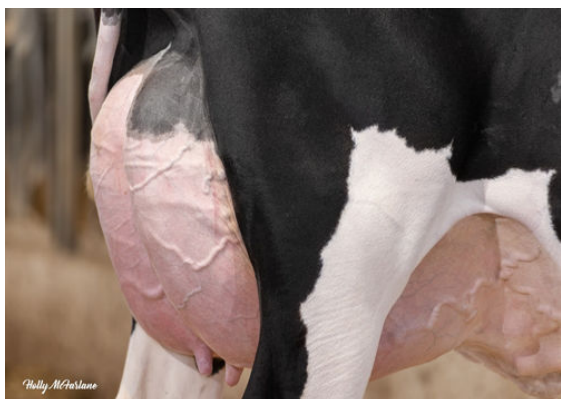
PTAT	1.96	Body Composite	1.12
Udder Composite	0.96	Dairy Composite	1.65
Feet & Legs Composite	0.85		



SHELAND PERFECT DAYBREAK
GRANDDAM



SHELAND PERFECT DAYBREAK
GRANDDAM



SHELAND PERFECT DAYBREAK
GRANDDAM