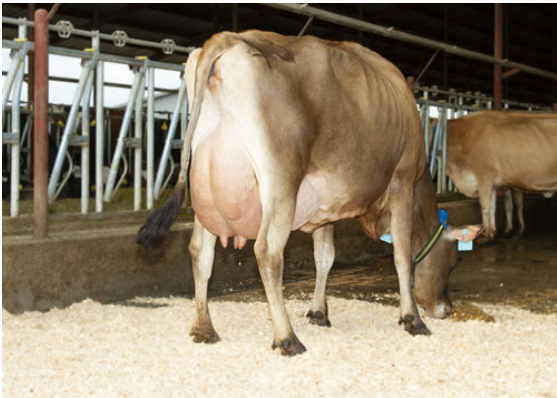




JX VIERRA SINATRA (4)  
 PROGENESIS MADISON EX-90%-3YR-USA  
 JX RIVER VALLEY CHIEF (6)  
 RACHELLES VICEROY LOUISE VG-88%-6YR-USA  
 CDF VICEROY  
 RACHELLES GENOMINATOR 7857



PROGENESIS MADISON-  
DAM



RACHELLES VICEROY LOUISE  
GRANDDAM



RACHELLES VICEROY LOUISE  
GRANDDAM

**GJPI 149** BBR 100 JH1F JNSF

Reg. #: JE840M3218042551 aAa: 432516 DMS: 123,126  
 Born: 01/23/2021 Kappa Casein: BB Beta Casein: A2A2

PRODUCTION		G Herds	G Dtrs	79% Rel	CDCB-G / 12-24				
Milk lbs	1027	Fat lbs	55	Fat %	+0.02	Protein lbs	41	Protein %	+0.01
NM\$	621	CM\$	629	FM\$	570	GM\$	524	DWP\$	986

**HEALTH & REPRODUCTION** Immunity 106

Productive Life	5.6	Calf Immunity	106
Somatic Cell Score	2.89	Cow Conception Rate	0.0
Daughter Pregnancy Rate	-1.0	Heifer Conception Rate	2.4
Livability	-0.8		
Heifer Livability	0.3		

**CONFORMATION** 1 Herds 1 Dtrs 81% Rel AJCA-G / 12-24

PTAT	1.5
Jersey Udder Index	18.2

Stature		Tall	+1.7
Strength		Strong	+0.1
Dairy Form		Open Rib	+1.5
Rump Angle		High	-0.5
Rump Width		Wide	+0.1
Rear Legs Side View		Posty	-0.3
Foot Angle		Steep	+0.5
Fore Attachment		Strong	+1.6
Rear Udder Height		High	+2.1
Rear Udder Width		Wide	+1.0
Udder Cleft		Strong	+0.5
Udder Depth		Shallow	+0.7
Fore Teat Placement		Close	+0.7
Teat Length		Long	+0.4
Rear Teat Rear View		Close	+0.6
Rear Teat Side View		Back	+0.5

-2 -1 0 1 2