



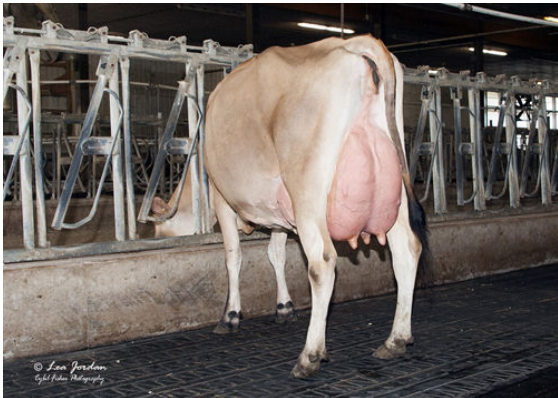
ISDK VJ TUDVAD SAMSON STENO
 JX RIVER VALLEY ALTAMONTRA MAC 2305 {5}
 JX PEAK ALTAMONTRA {6}
 JX RIVER VALLEY ENZO MACNCHEZ 6612 {4} EX-91%-4YR-USA
 JX CLOVER PATCH AVON ENZO {3}
 RIVER VALLEY LSTWL MACNCHEZ 5055 EX-91%-3YR-USA

GJPI 135			BBR 100 JH1F JNSF		
Reg. #: JE840M3252276861	aAa: 651423	DMS: 126,561			
Born: 06/15/2022	Kappa Casein: BB	Beta Casein: A2A2			
PRODUCTION		G Herds	G Dtrs	77% Rel	CDCB-G / 04-26
Milk lbs 173	Fat lbs 59	Fat % +0.26	Protein lbs 26	Protein % +0.10	
NM\$ 419	CM\$ 447	FM\$ 352	GM\$ 432	DWP\$ 573	



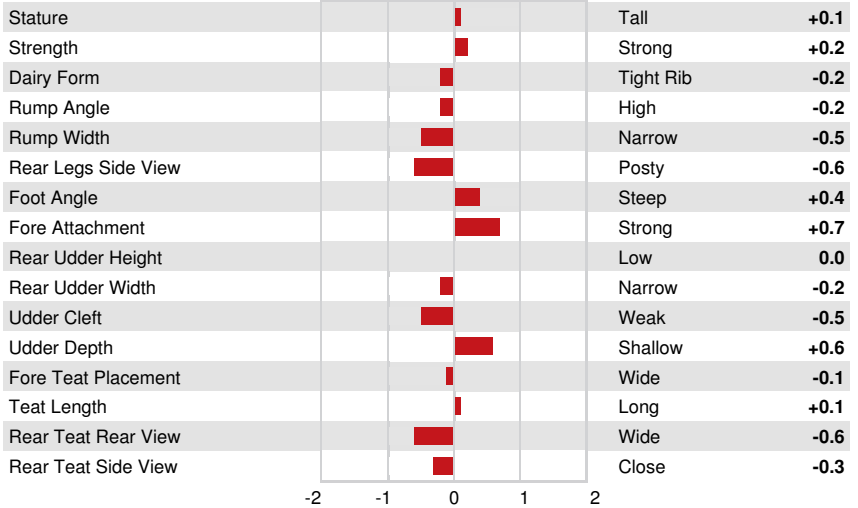
JX RIVER VALLEY ENZO MACNCHEZ 6612 {4}
 GRANDDAM

HEALTH & REPRODUCTION			Immunity 102	
Productive Life	0.4	Calf Immunity	100	
Somatic Cell Score	3.07	Cow Conception Rate	0.1	
Daughter Pregnancy Rate	0.8	Heifer Conception Rate	1.2	
Livability	0.2			
Heifer Livability	0.7			



RIVER VALLEY LSTWL MACNCHEZ 5055
 THIRD DAM

CONFORMATION		G Herds	G Dtrs	80% Rel	AJCA-G / 04-26
PTAT	-0.2				
Jersey Udder Index	15.6				



JX RIVER VALLEY ENZO MACNCHEZ 6612 {4}
 GRANDDAM