



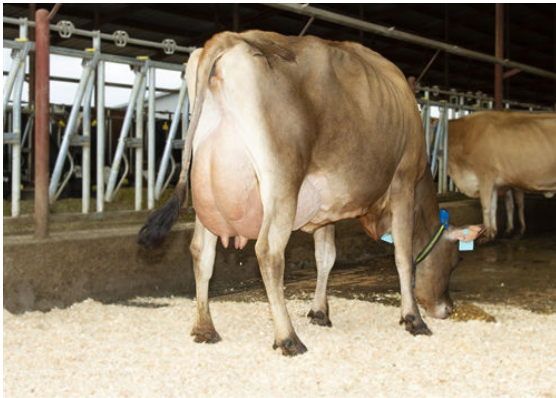
JX PROGENESIS MONARCH {5}  
 JX PROGENESIS MINNIE {5} VG-84%-4YR-USA  
 JX VIERRA SINATRA {4}  
 PROGENESIS MADISON EX-92%-5YR-USA  
 JX RIVER VALLEY CHIEF {6}  
 RACHELLES VICEROY LOUISE VG-88%-6YR-USA



JX PROGENESIS MINNIE {5}  
DAM



PROGENESIS MADISON-  
GRANDDAM



RACHELLES VICEROY LOUISE  
THIRD DAM

**GJPI 155** BBR 100 JH1F JNSF

Reg. #: JE840M3254283358 aAa: DMS: 561,126  
 Born: 10/29/2022 Kappa Casein: BB Beta Casein: A2A2

PRODUCTION		G Herds	G Dtrs	78% Rel	CDCB-G / 04-26		
Milk lbs	721	Fat lbs	46	Fat %	Protein lbs	Protein %	
				+0.05	28	0.00	
NM\$	475	CM\$	486	FM\$	411	DWP\$	797

**HEALTH & REPRODUCTION** Immunity

Productive Life	4.4	Calf Immunity	
Somatic Cell Score	2.92	Cow Conception Rate	-0.2
Daughter Pregnancy Rate	-1.1	Heifer Conception Rate	1.8
Livability	-0.3		
Heifer Livability	0.7		

**CONFORMATION** AJCA-G / 04-26

PTAT	1.3
Jersey Udder Index	23.2

Stature		Tall	+1.0
Strength		Strong	+0.2
Dairy Form		Open Rib	+0.5
Rump Angle		High	-0.7
Rump Width		Narrow	-0.3
Rear Legs Side View		Posty	-0.8
Foot Angle		Steep	+0.4
Fore Attachment		Strong	+1.8
Rear Udder Height		High	+1.8
Rear Udder Width		Wide	+0.8
Udder Cleft		Weak	-0.4
Udder Depth		Shallow	+1.4
Fore Teat Placement		Close	+0.7
Teat Length		Long	+0.3
Rear Teat Rear View		Close	+0.6
Rear Teat Side View		Back	+0.7

-2 -1 0 1 2