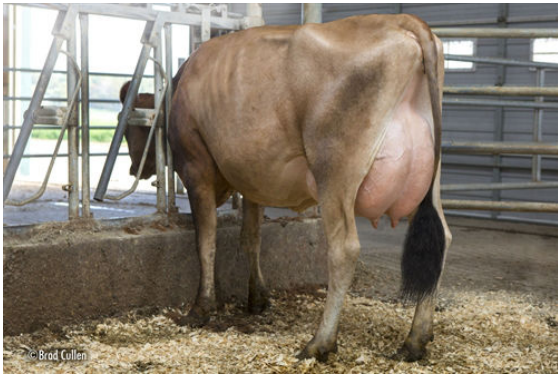




VIERRA PRETENDERS  
 RIVER VALLEY LISTOWL CSACT 44359-P DES-76%-2YR-USA  
 HILLVIEW LISTOWEL-P  
 RIVER VALLEY MILTON CRCSACT 4494 VG-87%-3YR-USA  
 IGL MAGNUM MILTON  
 GOFF PHAROAH CIRCUS ACT EX-90%-3YR-USA



GOFF PHAROAH CIRCUS ACT  
THIRD DAM



GOFF PHAROAH CIRCUS ACT  
THIRD DAM



GOFF PHAROAH CIRCUS ACT  
THIRD DAM

**GJPI 162** JH1F JNSF

Reg. #: JE840M3221920212      aAa: 462351      DMS:  
 Born: 03/11/2023      Kappa Casein: BB      Beta Casein: A2A2

PRODUCTION		G Herds	G Dtrs	74% Rel	CDCB-G / 08-24				
Milk lbs	996	Fat lbs	65	Fat %	+0.08	Protein lbs	40	Protein %	+0.02
NM\$	671	CM\$	679	FM\$	619	GM\$	590	DWP\$	1076

**HEALTH & REPRODUCTION** Immunity 98

Productive Life	5.4	Calf Immunity	100
Somatic Cell Score	2.86	Cow Conception Rate	0.8
Daughter Pregnancy Rate	-0.6	Heifer Conception Rate	1.8
Livability	0.6		
Heifer Livability	0.4		

**CONFORMATION** AJCA-G / 08-24

PTAT	1.5
Jersey Udder Index	17.1

