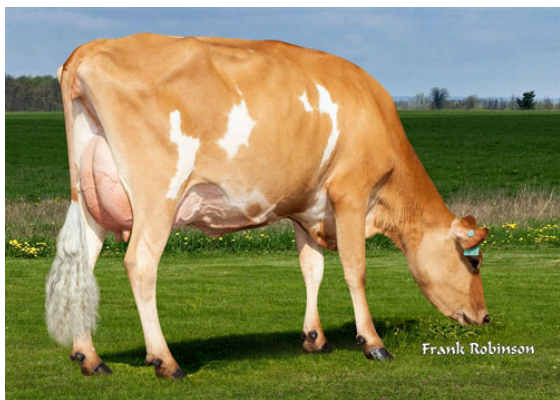




STEINHAUERS SAMSON LEMONHEAD  
 GOFF PHAROAH CIRCUS ACT EX-90%-3YR-USA  
 AHLEM HEADLINE PHAROAH 21795  
 GOFF VALENTINO 9595 VG-84%-4YR-USA  
 ALL LYNNS LOUIE VALENTINO  
 GOFF ACTION CHARLOTTE EX-90%-3YR-USA



PROGENESIS CRAZE CORD {6}  
 DAUGHTER



PROGENESIS CRAZE CORD {6}  
 DAUGHTER



RIVER VALLEY CIRCUS CRAZE DAUGHTERS  
 L to R - AHLEM CRAZE AUTUMN 52313, AHLEM CRAZE MARIE 52311,  
 FOREST CRAZE FRANCINE

**GJPI 60** BBR 100 JH1F JNSF

Reg. #: JEUSAM75341001 aAa: 126435 DMS: 561,126  
 Born: 10/12/2015 Kappa Casein: BB Beta Casein: A2A2

**PRODUCTION** 831 Herds 10040 Dtrs 99% Rel MACE-G / 08-24

Milk lbs <b>138</b>	Fat lbs <b>17</b>	Fat % <b>+0.05</b>	Protein lbs <b>-1</b>	Protein % <b>-0.03</b>
NM\$ <b>280</b>	CM\$ <b>277</b>	FM\$ <b>304</b>	GM\$ <b>209</b>	DWP\$ <b>298</b>

Daughter Average (ME) Milk **19,399 lbs** Fat **956 lbs** Protein **715 lbs**

**HEALTH & REPRODUCTION** Immunity 107

Productive Life	<b>4.3</b>	Calf Immunity	<b>102</b>
Somatic Cell Score	<b>2.99</b>	Cow Conception Rate	<b>0.6</b>
Daughter Pregnancy Rate	<b>-0.1</b>	Heifer Conception Rate	<b>0.1</b>
Livability	<b>3.2</b>		
Heifer Livability	<b>-1.2</b>		

**CONFORMATION** 471 Herds 4750 Dtrs 99% Rel MACE-G / 08-24

PTAT	<b>1.9</b>
Jersey Udder Index	<b>17.7</b>

