



WESTCOAST PERSEUS
 OCD SPRING SNAPPY 34275 EX-90-3E-CAN
 WESTENRADE SPRING
 OCD SUPERSIRE SNAPPY GP-80-3YR-USA
 SEAGULL-BAY SUPERSIRE
 OCD ROBUST SHIMMER EX-90-2E-USA DOM

GMACE LPI +3214 PRO\$ 1848

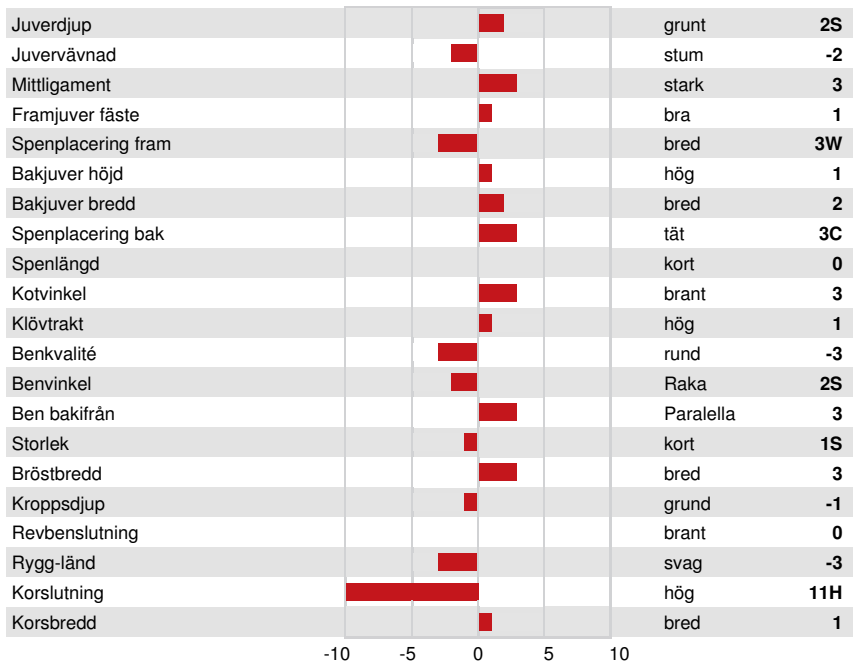
DPF RDF BLF CNF XIF BYF MWC CVF HH1F HH2F HH3F HH4F HH5C HH6F HCDF HMWC

Reg. #: HO840M3142935459 aAa: 315246 DMS: 345
 Född: 10/18/2017 Kappa kasein: AB Beta kasein: A2A2

| PRODUKTION | | | GMACE 26* APR | |
|-------------|---------|--------------------|-----------------|----------------|
| Mjök kg | Fett kg | Fett % | Protein kg | Protein % |
| 585 | 22 | -0.01 | 51 | +0.27 |
| Mjölklarhet | Lynne | Metan Effektivitet | Foderomvandling | Underhållskrav |
| 83 | 97 | 104 | 105 | 97 |

| FUNKTIONSEGENSKAPER | | Immunitet | 108 |
|---------------------|-----|----------------------------------|-----|
| Livslängd | 106 | Kalv Immunitet | 103 |
| Celltal | 107 | Kalvningar F | 101 |
| Dotterfertilitet | 104 | Kalvningar MF | 105 |
| Hullbedömning | 106 | Resistens mot metabola sjukdomar | 100 |
| Mastit resistens | 106 | Calf Health | 93 |
| Laktationskurva | 103 | | |

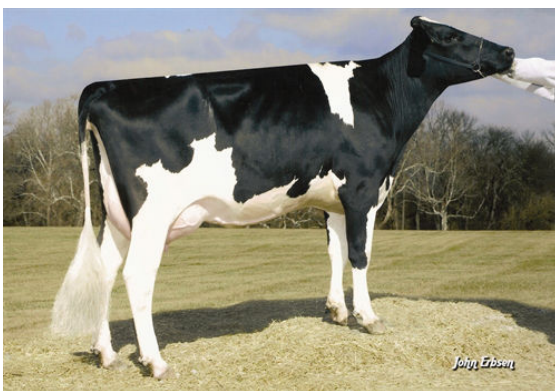
| HELHETSINTRYCK | | GMACE 26* APR | |
|----------------|---|----------------|----|
| Helhetsintryck | 0 | Dairy Strength | 0 |
| Juvar | 2 | Kors | -8 |
| Klövar & ben | 0 | | |



AMMON-PEACHEY SHANA
 FOURTH DAM



AMMON-PEACHEY SHANA
 FOURTH DAM



PINE-TREE MARTHA SHEEN TY
 FIFTH DAM