



WELCOME-TEL TAOS HAYK
 AOT DELUXE HI-LIGHTED EX-91-3YR-USA DOM
 C-HAVEN POSITIVE DELUXE
 AOT BIGGELO HASKEL2 EX-92-5YR-USA DOM
 S-S-I DELROY BIGGELO
 AOT JARED HASKEL VG-85-2YR-USA

BPI +726 Rel. 66% ASI 352

HH1F HH2F HH3F HH4F HH5F HH6F HCDF HMWF ABV 25*DEC

HWI +558 Rel. 62% **SI +788** Rel. 63%

PRODUCTION G Herds G Daughters 76% Rel RIPS 0%

Milk kg **-50** Fat kg **42** %Fat **0.63** Protein kg **14** %Prot **0.29**

CONFORMATION G Herds G Daughters 62% Rel

90 95 AVG 105 110

Overall Type **112**

Mammary System **113**

Feet and Legs **98** Dairy Strength **105** Rump **103**

MAMMARY SYSTEM

Udder Texture **104** Centre Ligament **106**

Udder Depth **107** Teat Placement (front) **107**

Fore Attachment **107** Teat Placement (rear) **106**

Rear Attach. Height **111** Teat Length **100**

Rear Attach. Width **109**

DESCRIPTIVE

Stature **109** Chest Width **103** Bone Quality **105**

Angularity **104** Loin Strength **104** Foot Angle **95**

Muzzle Width **103** Pin Width **104** Rear Set **102**

Body Depth **102** Pin Set **100** Rear Leg Rear View **103**

AUXILIARY TRAITS

Immunity 99

Milking Speed **104** Calf Immunity **87**

Temperament **102** Survival **108**

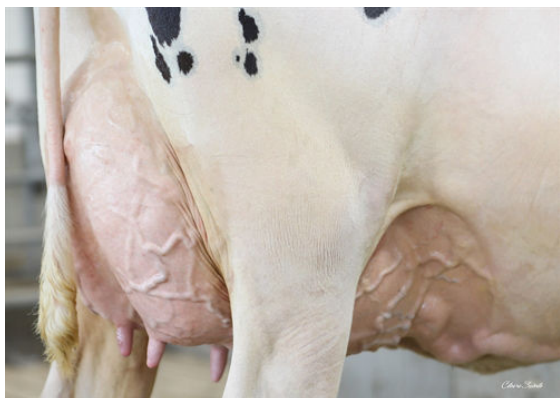
Likability **104** Liveweight **107**

Feed Saved **-222** Somatic Cell Score **146**

Gestation Length **-5** Daughter Fertility **106**

Heat Tolerance **97** Mastitis Resistance **102**

Calving Ease **101**



AOT DELUXE HI-LIGHTED

DAM



AOT DELUXE HI-LIGHTED

DAM



AOT DELUXE HI-LIGHTED

DAM